



REVERSE CAMERA SLOW RESPOND FOR NAVARA 10.2" PLAYER

Memorandum

To: All Hardstone Customer using Hardstone player for Navara 10.2" System

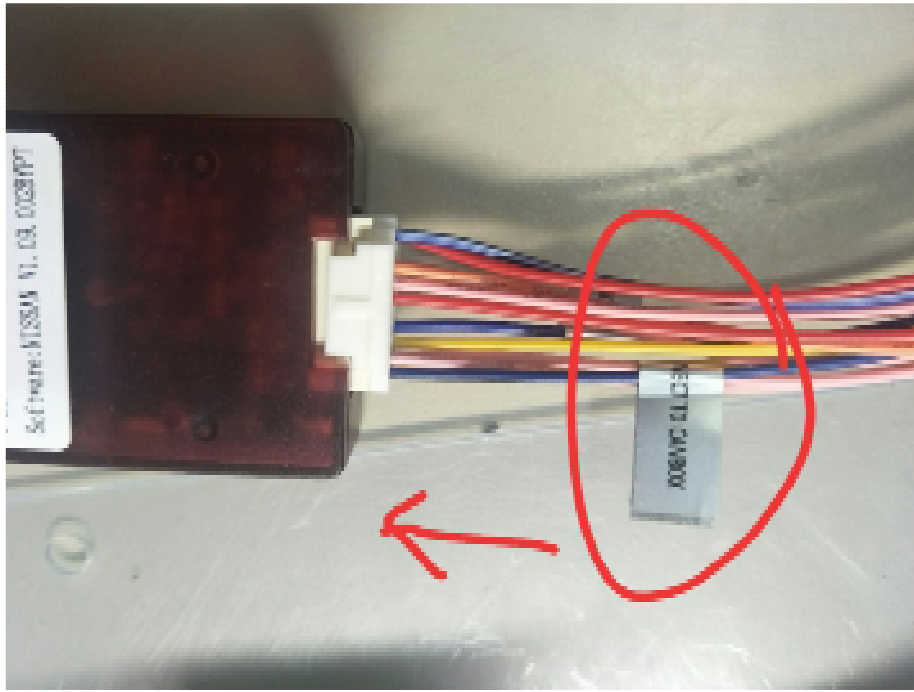
From: Hardstone Support

Date: 17 Mar 2018

REVERSE CAMERA SLOW RESPOND FOR NAVARA 10.2" PLAYER

There is several reports few customer has problem with reverse camera slow respond for Navara 10.2" Screen (Batch ID Jan 2018 to now). Details as below: -

- 1) **Symptoms:** - Reverse image will take 23 second extra once done with 'REVERSE' gear usage.
- 2) **Impact:** - Delay 23 second to play music after reverse gear.
- 3) **Risk:** - LOW RISK – No impact to System
- 4) **Finding:** - Problem due to installation error (wrong canbus cabling and canbus switch location).
- 5) **Right method:** -
 - a. Canbus cabling:- Cable connector need to follow cable marker





b. Canbus switch – Need to be in RIGHT



For customer with this issue, please contact our support team at Support@hardstone.com.my. Thank you